

# December 2012

## *Mountaineer Woodturners*

A chapter of the American Association of Woodturners

President John Sheets called the December meeting of the Mountaineer Woodturners to order at 10:00 on Saturday, December 8<sup>th</sup>, 2012. There were nineteen members and two visitors present. John welcomed everyone to the monthly meeting.

Vice President Byron Young announced that Doug Kemp would administer the club's chapter challenge this year. (challenge details later in this newsletter) Regarding the challenge prizes, a motion was made to set the monetary prizes for the challenge winners as follows:

1 <sup>st</sup> place	\$100.00
2 <sup>nd</sup> place	\$50.00
3 <sup>rd</sup> place	\$25.00

The motion carried unanimously. Also, the club will purchase a plaque for permanent display in the meeting room which depicts the winners of the club challenge each year.

Treasurer John Gregor reported a balance of \$4581.40 in the club treasury with all bills paid.

## Show and Tell

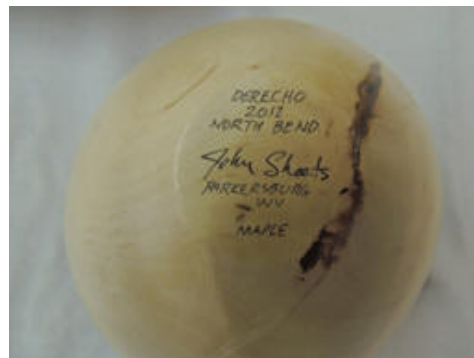
Doug Kemp displayed a cherry bowl, a rosewood bowl, and a "double" bowl of catalpa. Byron had two platters finished with milk paint and an oak bowl with a decorative band.



John Gregor turned a Gillette style razor and matching shaving brush. Larry Weese did some "relaxing" turning and created these acorn pillboxes.



John Sheets had three pieces emphasizing his flawless turning technique. Jimmy Morrison brought a small segmented vase with the same qualities.



Larry Weese had three pieces demonstrating his design diversity and attention to details.



Fred Belknap brought a tulip vase turned from cedar and a spalted apple bowl. Jim Withee displayed two nice pens.



Beyond the club show and tell, Jerry Smith has two turned pieces displayed in the Winter 12 issue of *WV Living Magazine* and Byron Young has a peppermill “how to” article in the December/January issue of *Woodcraft Magazine*.

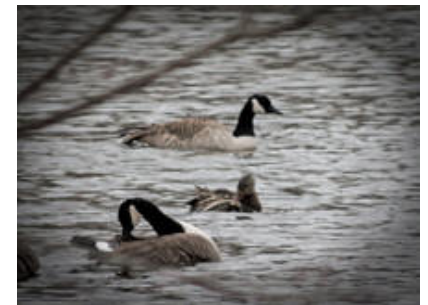
Jerill Vance sent along a link to [his wood working site](#).

The next Mountaineer Woodturners' meeting is scheduled for 10:00 Saturday, January 2013. Byron will demonstrate the texturing process and milk paint finishes he uses for his platters. Larry Weese will demonstrate the wood burning techniques he uses on his bowls.

Remember to pay your 2013 dues if you have not done so.

## Around the Meeting





## Challenge – December 2012

The challenge this year is **THINK OUTSIDE THE BOX!**  
You **cannot** make a bowl, platter, vase, pen, hat or anything that you would normally turn.

**For Example** – I make bowls, night lights, pens, snowmen and lamps, so I can't show up with any of those items.

If you make a lidded box, it needs to be very creative, what we want to see is what you can come up with that you don't normally

turn.

You can add different things to it that are not turned but the main focus is the **turning part** you can frame it, set it or hang it.

The more artsy the better; let's have fun with it and see what we can come up with.

**I think it will fun to see what we get.**

We need as many as can to participate in the challenge.

We will be judging on creativity and finish.

**The rules are:**

The piece cannot be more than 12" wide and 24" tall, that way most all the lathes can be used, so those who have small lathes will have a chance at winning also.

It can hang or set on its own, However if it hangs then you have to make something for it to hang on.

**Again**, it cannot be something that you normally turn.

**!!HAVE FUN!!**

---

[\[Return to Top of Page\]](#)

[\[Home\]](#)[\[Chapter Information\]](#)[\[Meeting Information\]](#)[\[History\]](#)[\[Calendar\]](#)[\[Newsletter\]](#)[\[Gallery\]](#)  
[\[Woodturning Links\]](#)[\[Other Links\]](#)[\[Tips and notes\]](#)