



A chapter of the American Association of  
Woodturners

December 2013

## Business

President John Sheets called the December meeting of the Mountaineer Woodturners to order at 10:00 on Saturday, December 14, 2013. We had no new guests today but almost 25 members attended.

Treasurer John Gregor reports we have a balance of \$4847.67 in our bank account.

Vice-President Byron Young showed us the new business cards for the club for our use as needed. Next month the program will be our chapter challenge hosted by Larry Weese. Guidelines were provided by Larry and can be found at the end of the newsletter. First Place prize is \$100, Second Place prize is \$50, and the Third Place prize is \$25.

The Artistree dinner will be held December 15 in Charleston for all who submitted Christmas tree ornaments for the Governor's Mansion.

The latest possible rumors concerning the closing of Cedar Lakes are thus: the state Board of Education may be transferring the properties to a Cedar Lakes Foundation over a period of some years (5?). There will be changes in the operation of Cedar Lakes that will affect us but we don't know how at this time. If you can think of a good rumor for us, pass it on. We will publish next month.

Byron has almost completed our meeting schedule for next year. A couple of biggies are Alan Carter for the May meeting and Ashley Harwood for October. Check their websites for examples of what they will be demonstrating for our benefit.

For your information, Tamarack has opened up its gallery area for juried woodworkers and woodturners.

Food for thought: how about the club sponsoring a "liteshow" presentation for Cedar Lakes next year?

Larry Weese will be taking over as club treasurer as of January 1, 2014. Thanks for helping us out, Larry! And lots of thanks to John Gregor for all the help he has given us the last couple of years.

## Show and Tell

Fred Belknap turned an ash bowl decorated with a dark band and finished with shoe polish.



Byron  
Young  
showed  
more of

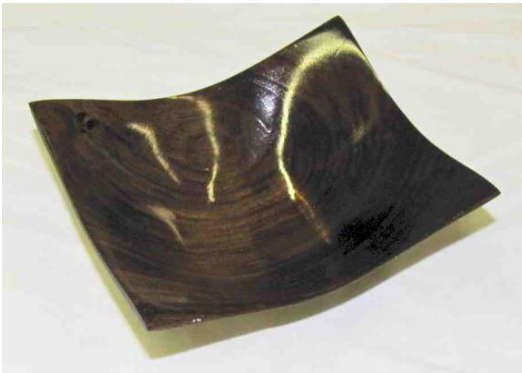


his Americana style poplar bowls with milk paint dabbed on with a sponge and crinkle paint.

Larry Weese showed his lidded box, his spalted maple bowl with a brown trim ring and his "Going Full Circle" made from Bradford pear and milk paint. The last project took some really fancy turning to keep his fingers out of the way.



Tom Schottle brought his square bowl made from Texas ebony, an evergreen wood, and a strip of bendable white oak.



**Ron Jones turned three pens with cases and presented them on a walnut table stand.**



**Bill Smith turned a pair of snowmen from poplar finished with water color paints. They were finished with sprayed on snow, but that melted. What's left has been given out as door prizes. Some people have all the luck.**

**Bob Lett brought his cherry burl natural edged bowl.**







Jim Morrison turned a yellow "Charlie Brown" bowl.

Dave Jones brought a nice assembly of small bowls and some lidded boxes of Yucatan rosewood.



Warnie Lore made a candy platter from maple burl with a maple handle.

2014 CHAPTER CHALLENGE



*Embellishment*

**RULES:**

- You must have a minimum of two embellishments, you can use more.
- Embellishments are not limited to burning, carving, paint, texture, piercing, and all inlays.
- Only 1 item per person
- Use any wood or combination of woods.
- Segmentation or Natural edge will not count as an embellishment.
- Size limit of 16" dia X 20" length.
- Wood must be the primary medium and the use of the lathe must be obvious.
- All embellishments must be done with hand tools, No computer driven tools..

**Judging: Will be done by others, under this criteria...**

- Originality (does the item demonstrate sufficient artistry and creativity.)
- Embellishment (Do the elements add appeal or distraction for the overall impact.)
- Form (Shape, Movement, Center of Interest, Balance, Rhythm, Harmony, Contrast)
- Fit (Scale, Proportion, Consistency of Design Elements)
- Finish (Sanding, Color, Texture, Type of Finish)

Larry Weese Jr

304-786-6082

Moutaineer woodturners

**Attention! Attention! The size limit of the Chapter Challenge project has been changed to 16" diameter X 20" length.**

---

[\[Return to Top of Page\]](#)

[\[Home\]](#)[\[Chapter Information\]](#)[\[Meeting Information\]](#)[\[History\]](#)[\[Calendar\]](#)[\[Newsletter\]](#)[\[Gallery\]](#)[\[Woodturning Links\]](#)[\[Other Links\]](#)[\[Tips and notes\]](#)