

Mountaineer Woodturners

A chapter of the American Association of Woodturners

May 2013

May Meeting

President John Sheets called the May meeting of the Mountaineer Woodturners to order at 10:00 on Saturday, May 11, 2013. We had a special demonstration with Kim Winkle and so abbreviated our regular business meeting.

Kim Winkle is a professional artist and teacher with an MFA degree, and a well-known demonstrator of woodturning and surface decoration. Her original training was in designing one-of-a-kind furniture pieces. Most of her works are turned from poplar, which she often glues up from 8/4 stock. She prefers poplar since it is very receptive to paint, which she uses on almost all of her works.

Show and Tell



Byron Young has been busy this past month. He started with a cherry bowl and a milk painted textured rim, then a milk painted cherry bowl with sap bleed through (very interesting and beautiful), followed by a cherry textured and painted vase, and. finally, a cherry and walnut sculptured form. Whew !



Larry Weese was busy, too. He showed up with a cherry bowl using a textured, milk painted rim and three other bowls with his patented Corian rims. Nice work, Larry.



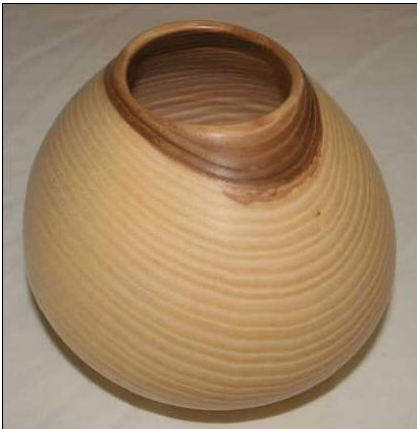


showed a small box with his very last stained glass lid ever and two maple bowls, conventional style and natural edge style. Enjoy the stained glass while you can. What a loss!



Fred Belknap turned a large maple hollow form with striking figure due to spalting and some burl areas.

John Sheets brought an ash hollow form, a walnut cut-rimmed bowl, and a thin walnut bowl with feather figure to show achieving symmetry or asymmetry due to planning the orientation of the blank in the log. Wow, that's a real mouthful but a great picture lesson we can all heed. Great work, John.



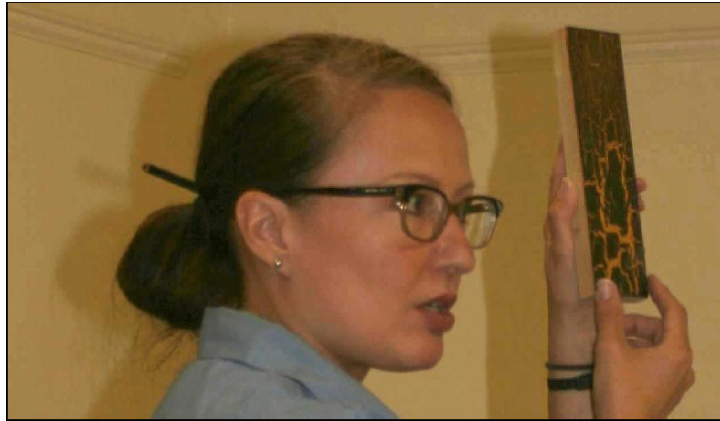
Warnie Lore brought his silver maple burl from Warnie's yard, which features a remarkable burl pattern and flawless Danish oil finish



Jerry Smith brought one of his trademark hickory footed vases, with a great pattern resulting from a sapsucker pecking into the tree. (This piece is turned in end-grain orientation, which Jerry will demonstrate at the June meeting!)

Kim Winkle in Action





Remember to pay your 2013 dues if you have not done so.

Tools For Sale

These are some tools that I'm not using any more and am not likely to. All are in good to excellent condition; they're used but not abused.

- Sorby 1/2" bowl gouge - \$50
- Ray Key skew chisel (unused) - \$25
- Ray Key dual angle scraper - \$45
- Packard 3/4" scraper, ground to a sort of "hook" profile for working under the lip of a vessel. Plenty of steel left to re-grind it if you don't like what I've done to it. - \$25
- Sorby hollowing set for ornaments. These are small (3/16" shank, about 10" long including handle), one straight, two curved. Made by Sorby exclusively for Woodcraft and not available elsewhere. New price is \$130, my price \$70.
- Crown parting tool - hard to describe this thing, and it seems to not be in the catalogs anymore. It has a diamond profile but the tip is asymmetrical, with a convex curve below the center and a concave curve above. I think this might have been marketed as a David Ellsworth parting tool. \$25.

Pictures available on request. Shipping for one tool is \$5, free for more than one tool.

Dave Shombert

304-636-8083

dave@woodspunworkshop.com

[\[Return to Top of Page\]](#)

[\[Home\]](#) [\[Chapter Information\]](#) [\[Meeting Information\]](#) [\[History\]](#) [\[Calendar\]](#) [\[Newsletter\]](#) [\[Gallery\]](#) [\[Woodturning Links\]](#) [\[Other Links\]](#) [\[Tips and](#)

